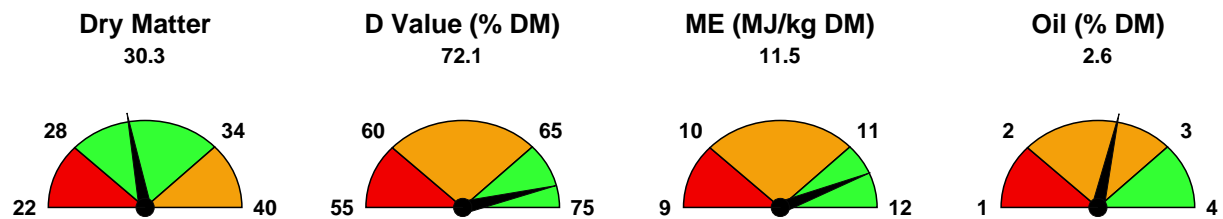


# Maize Silage

## Forage and Rumen Management

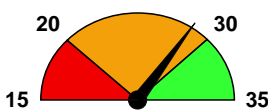
<b>Farm Details</b>		<b>Advisor Details</b>	
<b>Sample Details</b>			
Sample Name: Clamp 1	Additive:	Date received: 24/07/2009	Lab Reference
Sample Type: Maize Silage	Harvest Date:	Date reported: 24/07/2009	avm

### Forage Energy

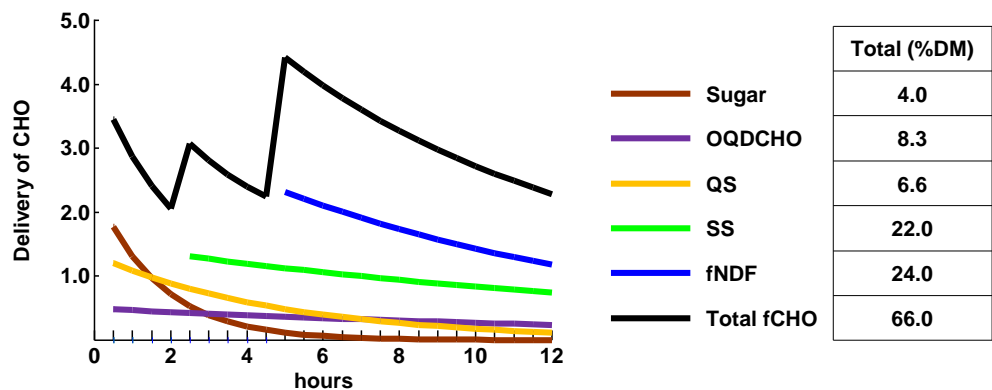
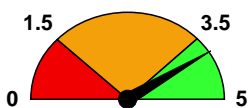


### Forage Carbohydrate

**Total Starch (% DM)**  
29.1



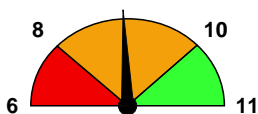
**Total Sugar (% DM)**  
4.0



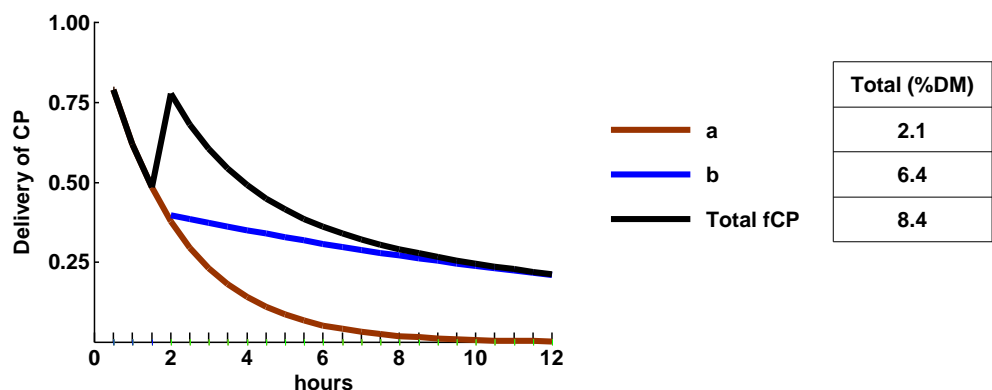
Key: OQDCHO - Other Quickly Degraded Carbohydrate; QS - Quick Starch; SS - Slow Starch; fNDF - fermentable Neutral Detergent Fibre; Total fCHO - Total fermentable Carbohydrate

### Forage Protein

**Crude Protein (% DM)**  
8.9

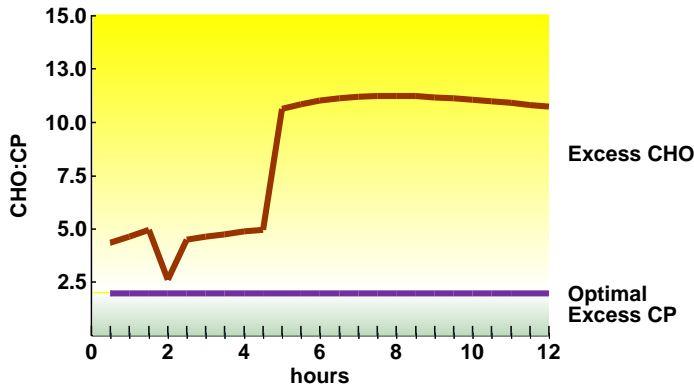


**Ammonia (% Total N)**  
2.7



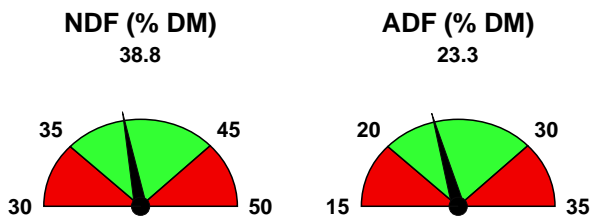
Key: a - Quick CP; b - Slow CP; Total fCP - Total fermentable CP

## Carbohydrate:Protein Ratio

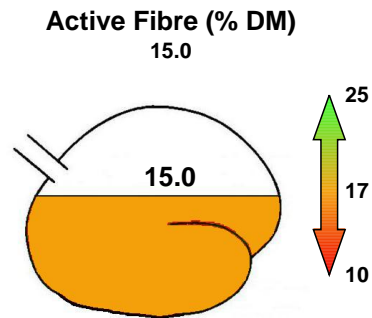


A ratio of 2 parts carbohydrate to 1 part crude protein is optimal for good rumen function and health. Increasing ratios above that to 5 or 10 denotes a lack of crude protein for the carbohydrate delivered.

## Forage Fibre

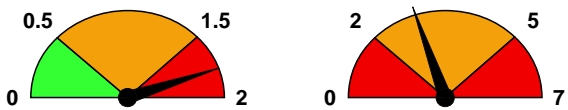


## Active Fibre

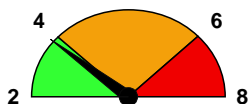


## Fermentation Characteristics

**Volatile Fatty Acids (% DM)** 1.8  
**Lactic Acid (% DM)** 2.8

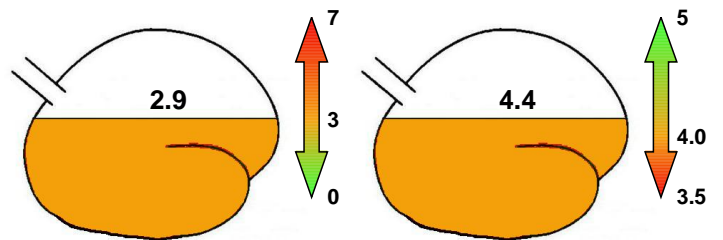


**Ash (% DM)** 3.6

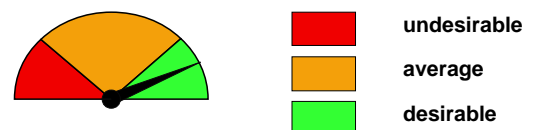


## Rumen Characteristics

**Lactic Acid (% DM)** 2.9  
**Forage pH** 4.4



## Key



Whilst all reasonable care has been taken in the production of this report, Biotol Ltd, its directors and employees cannot accept any liability for any loss howsoever arising from the use of this report.