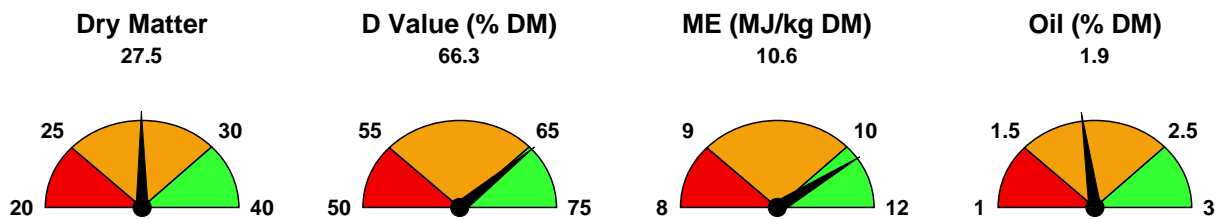


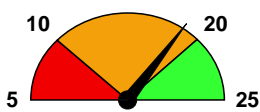
Farm Details		Advisor Details	
Sample Details			
Sample Name: Lupicaleage	Additive:	Date received: 07/11/2008	Lab Reference
Sample Type: Wholecrop Legume	Harvest Date:	Date reported: 07/11/2008	avlh

Forage Energy

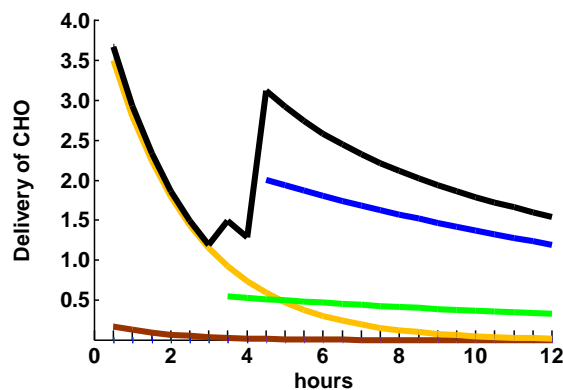
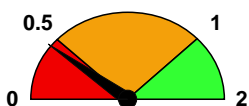


Forage Carbohydrate

Total Starch (% DM)
19.2



Total Sugar (% DM)
0.4

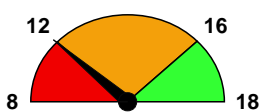


	Total (%DM)
Sugar	0.4
OQDCHO	0.0
QS	9.8
SS	9.4
fNDF	30.0
Total fCHO	49.0

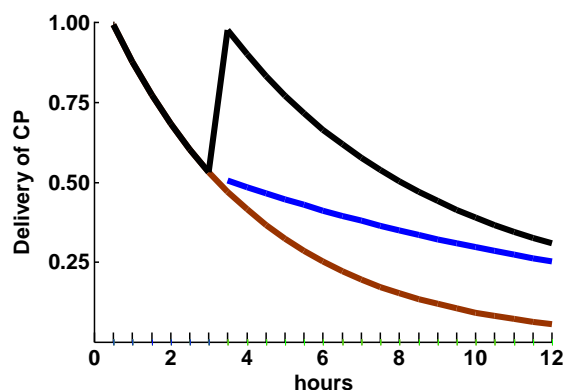
Key: OQDCHO - Other Quickly Degraded Carbohydrate; QS - Quick Starch; SS - Slow Starch; fNDF - fermentable Neutral Detergent Fibre; Total fCHO - Total fermentable Carbohydrate

Forage Protein

Crude Protein (% DM)
11.6



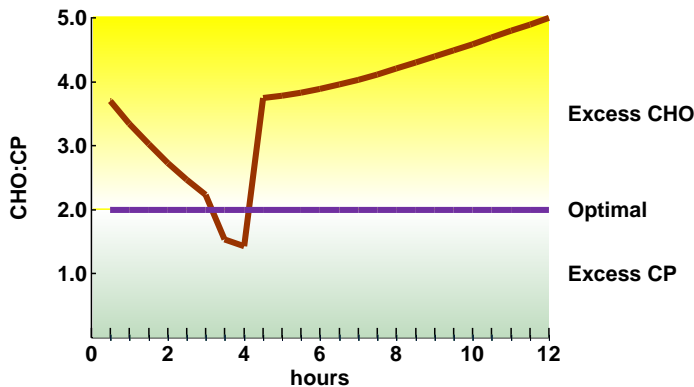
Ammonia (% Total N)
1.6



	Total (%DM)
a	4.5
b	6.4
Total fCP	11.0

Key: a - Quick CP; b - Slow CP; Total fCP - Total fermentable CP

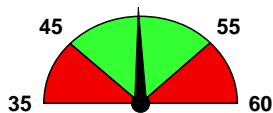
Carbohydrate:Protein Ratio



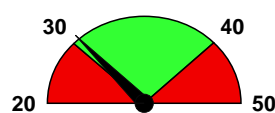
A ratio of 2 parts carbohydrate to 1 part crude protein is optimal for good rumen function and health. Increasing ratios above that to 5 or 10 denotes a lack of crude protein for the carbohydrate delivered.

Forage Fibre

NDF (% DM)
49.9

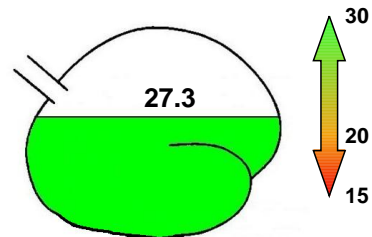


ADF (% DM)
29.9



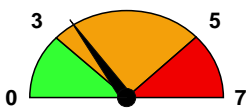
Active Fibre

Active Fibre (% DM)
27.3

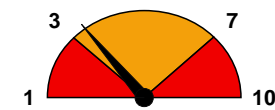


Fermentation Characteristics

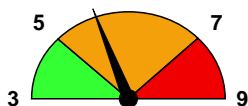
Volatile Fatty Acids (% DM)
3.2



Lactic Acid (% DM)
3.2

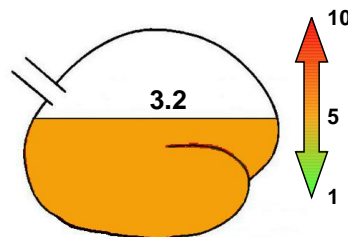


Ash (% DM)
5.5

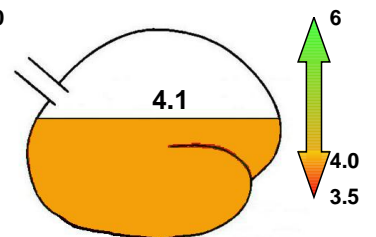


Rumen Characteristics

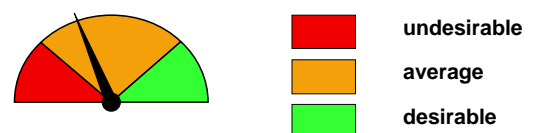
Lactic Acid (% DM)
3.2



Forage pH
4.1



Key



Whilst all reasonable care has been taken in the production of this report, Biotol Ltd, its directors and employees cannot accept any liability for any loss howsoever arising from the use of this report.