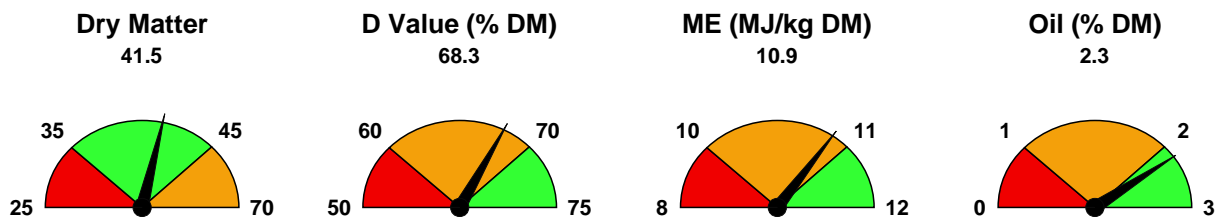


| | | | |
|-------------------------------|---------------|---------------------------|---------------|
| Farm Details | | Advisor Details | |
| | | | |
| Sample Details | | | |
| Sample Name: Clamp 3 | Additive: | Date received: 04/02/2009 | Lab Reference |
| Sample Type: Wholecrop Silage | Harvest Date: | Date reported: 04/02/2009 | avw |

Forage Energy

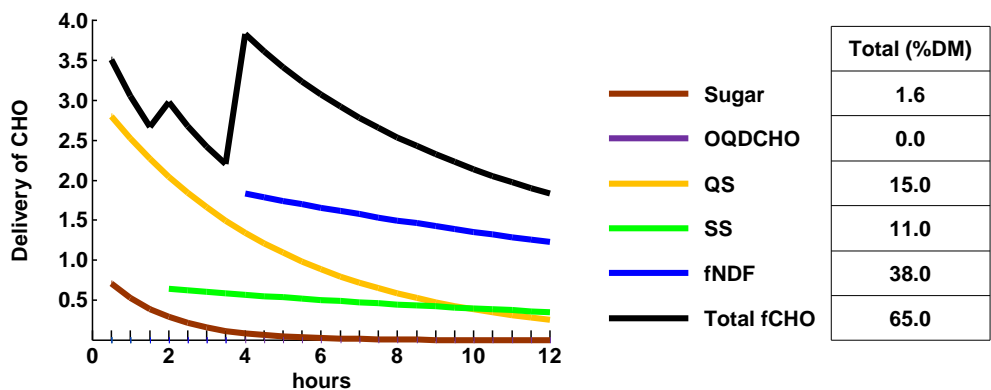


Forage Carbohydrate

Total Starch (% DM)
25.6



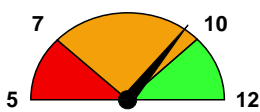
Total Sugar (% DM)
1.6



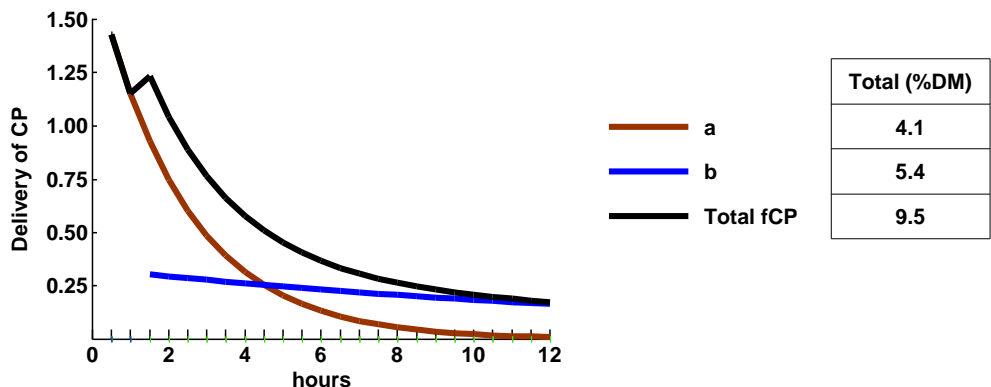
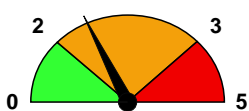
Key: OQDCHO - Other Quickly Degraded Carbohydrate; QS - Quick Starch; SS - Slow Starch; fNDF - fermentable Neutral Detergent Fibre; Total fCHO - Total fermentable Carbohydrate

Forage Protein

Crude Protein (% DM)
9.8

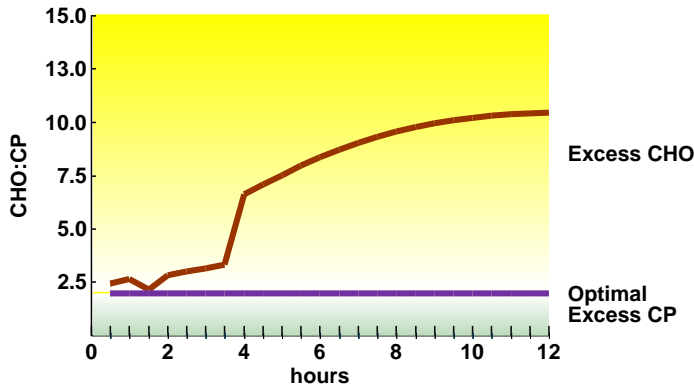


Ammonia (% Total N)
2.2



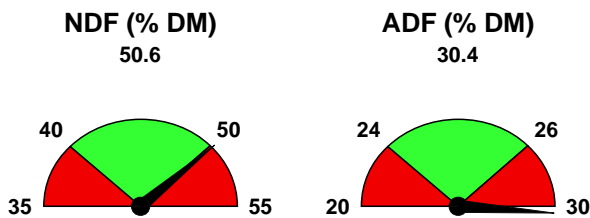
Key: a - Quick CP; b - Slow CP; Total fCP - Total fermentable CP

Carbohydrate:Protein Ratio

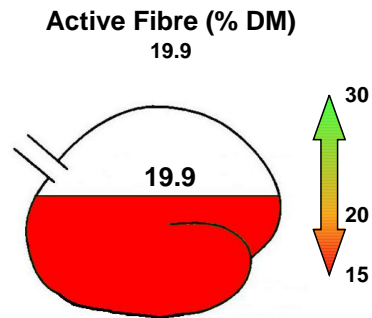


A ratio of 2 parts carbohydrate to 1 part crude protein is optimal for good rumen function and health. Increasing ratios above that to 5 or 10 denotes a lack of crude protein for the carbohydrate delivered.

Forage Fibre

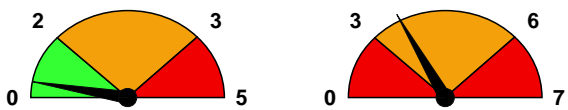


Active Fibre

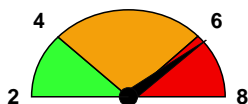


Fermentation Characteristics

Volatile Fatty Acids (% DM) 0.4
Lactic Acid (% DM) 3.5

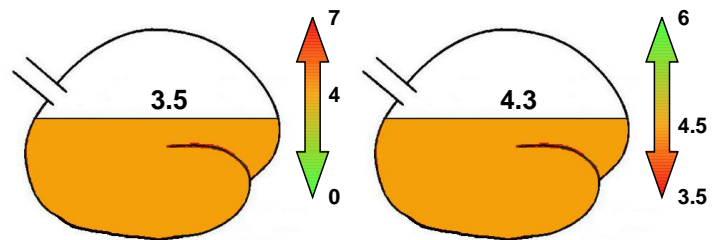


Ash (% DM) 6.4

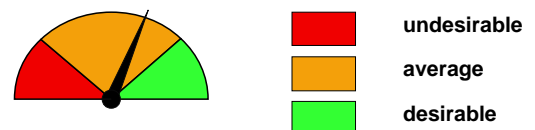


Rumen Characteristics

Lactic Acid (% DM) 3.5
Forage pH 4.3



Key



Whilst all reasonable care has been taken in the production of this report, Biotol Ltd, its directors and employees cannot accept any liability for any loss howsoever arising from the use of this report.