

Fermaid Ease: a natural feed ingredient to help maintain gastric health in intensively managed horses at risk from gastric ulcers

Fermaid Ease 187 is the product of the fermentation of soya flour by specific lactic acid bacteria *L. delbrueckii lactis Rosell-187*.

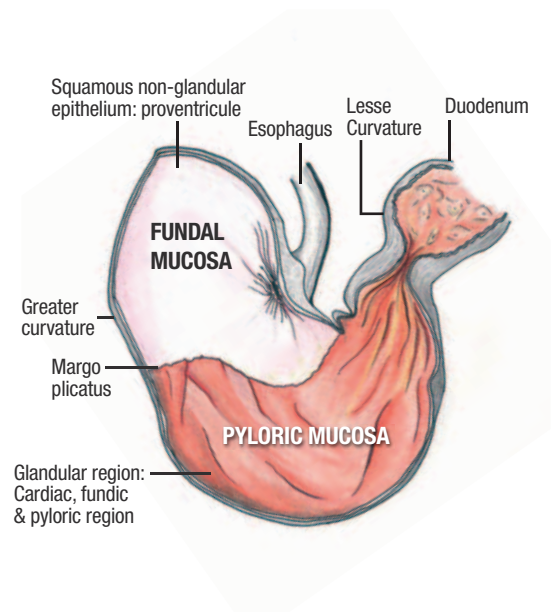
Fermaid Ease is successfully used in human that are subject to gastric ulceration.

Fermaid Ease maintains gastric health

Gastric Ulcers are a significant issue for many types of horses including racing and performance horses, mares at stud, foals and leisure horses. Gastric ulcers are lesions that develop in the lining of the stomach or gastric mucosa and their number and severity can vary according to a diagnostic scale of 0-4. **Gastric ulcers are common and the prevalence in racehorses is estimated to be near to 90% (Murray and al., 1996).**

The development of ulcers occurs when the inherent mucosal protective mechanisms (mucous and bicarbonate secretion, increased blood flow and cell turnover), are overwhelmed by the aggressive action of gastric acid and other protein digesting enzymes.

There are many clinical signs indicating the presence of an ulcer (Colic, irregularity of appetite, unenthusiastic at work...) but a majority of ulcerous episodes remain silent.



Fermaid Ease



- 1** maintains the integrity of the digestive tract: controls gastric acid production and supports cell regeneration.
- 2** contributes to the well-being of your horse: reduces the clinical signs associated with stress.
- 3** strengthens the health of your horse: limits the consequences of stress.





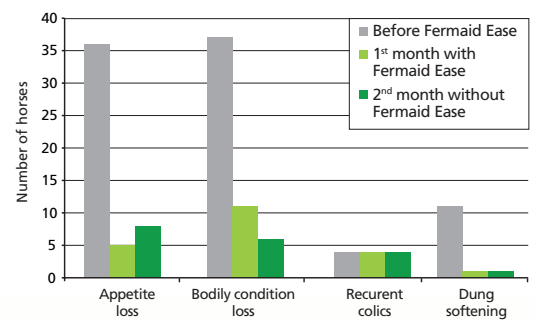
1 Fermaid Ease controls gastric acid production and supports cell regeneration



Fermaid Ease inhibits gastric acid production and reduces irritation of the mucosa. It stimulates cellular regeneration of the gastric epithelium by interacting with the immune system (increases the anti-inflammatory interleukins IL-6 and inhibits the formation of inflammatory cytokines IL-8 and TNF- α). It is also likely to have direct buffering effects and may effect blood flow and bicarbonate secretion.

2 Fermaid Ease reduces the clinical signs associated with gastric ulcers in horses

Intensively managed horses such as racehorses or other performance horses have little access to pasture, spending much of their time in the stable. They are meal-fed often with inadequate access to forage leaving the stomach partially empty for periods of the day. In horses, the production of gastric acid and proteolytic enzymes is continuous. An empty stomach increases the contact between the gastric juices and the stomach lining leading to its erosion. Loss of appetite reduced body condition, recurrent colic and loose droppings are all indicators that gastric ulceration may be present. **Fermaid Ease** can be used following traditional veterinary therapy to maintain gastric health.



Veterinary Clinic Les Bréviaires, 2007, 40 horses which received Fermaid Ease only during one month.

3 Fermaid Ease for foals health

Foals are very sensitive to gastric ulcers, which can be fatal. Again there are many factors that contribute to gastric ulcers in foals including physiological stress, underlying diseases, transport, weaning, or generalised reduction in milk or feed consumption. There are also many non specific symptoms of gastric ulceration in foals, including: teeth grinding (bruxism), increased salivation, diarrhoea, poor or infrequent feeding or failure to thrive.

Fermaid Ease can be fed to foals during periods where they are at risk from gastric ulcers.



Recommended inclusion rate

25 g/horse/day. This can be doubled at times of high stress for a period of 30 days or in combination with veterinary anti-ulcer medication.

12.5 g/foal/day during 30 days at weaning.